



Genesee Valley Conservancy

Take Me
Home!

Presents:

Genesee Valley 100

A Community Painting Project

2022



Heron in the Gloaming
by Anne Pepe



Genesee Valley Conservancy

**Our Mission:
To protect the habitat, open
space, and farmland of the
Genesee Valley region.**

Genesee Valley Conservancy is your
local conservation organization.

Since our founding in 1990, we've
helped protect 27,595 acres of unique
habitat, productive farmland, and scenic
open space in the Genesee Valley.

With your help,
we can continue these efforts.



Genesee Valley Conservancy

I am thrilled to share with you this wonderful collection of paintings inspired by the Genesee Valley!

The diverse subject matter that makes up this year's collection, from boardwalks and birds to farms and forests, captures the diverse landscape that makes the Genesee Valley so special.

We are working to protect the Genesee Valley to ensure quality soils are available for farmers, forests filter our drinking water, wildlife has habitat to survive, and the community has places to get outside for recreation and enjoyment.

You can support local conservation work by purchasing a painting or making a donation to Genesee Valley Conservancy this year.

Enjoy this fantastic collection of original art and the talents of these artists!

A handwritten signature in a cursive script, reading "Ben".

Benjamin Gajewski
Executive Director

The Genesee Valley 100 was made possible by generous support from



About Steed Energy

Glenn Steed installs solar energy systems throughout New York, primarily focusing on residential systems in the Rochester region that can replace 100% of your electricity needs.



Case Study:

Conservancy Office at 1 Main Street Geneseo

In 2019, Glenn installed a 5.5kW system on Genesee Valley Conservancy's office in Geneseo. The system covers 100% of our electric and avoids 3.9 tons of carbon pollution each year!

Over the next 25 years, we'll avoid nearly 100 tons of carbon pollution as a result of using renewable clean energy.

In 2026 we'll break even on our investment and after 25 years we'll have seen a 70% savings. This means we'll have more to invest in land protection, all while reducing carbon pollution!

Contact

Glenn Steed
585-443-2070

solar@steedenergy.com

Genesee Valley 100

A Community Painting Project

Nov. 16 - Dec. 31

Web Gallery: www.GeneseeValleyConservancy.org/gv100



In Person: Silver Lake Brewing Project
14 Borden Ave, Perry, NY 14530
Wed/Thur 5pm - 9pm
Fri/Sat 12pm - 9pm
Sunday 12pm - 6pm

The Works: All works are original and inspired by the Genesee Valley.

The Project: We asked artists to create a piece inspired by the Genesee Valley in order to compose a mosaic of the local landscape through painting.

Sales: Prices were set by the artists and benefit the artist and Conservancy.

Purchasing: On our website (above) or if you prefer to use cash or check, please contact the Conservancy (585-243-2190) and we will put a hold on your desired purchase for you to drop off or mail cash/check to our office.

Pickup: Buyers will pick up their purchase(s) at the Conservancy (One Main Street, Geneseo) starting Jan. 3rd. If desired, pieces can be picked up the week of Dec. 19th for gift giving by arrangement. Please contact the office. E-mail or call to arrange pickup: info@geneseevalleyconservancy.org
585-243-2190

Shipping: Paintings can be securely packed and shipped in the USA for \$20 per canvas. Paintings will ship starting Jan. 4.

Questions: Contact the Conservancy at 585-243-2190 or at info@geneseevalleyconservancy.org

Genesee Valley 100 | 2023: Send us an email to be added to our call for participants in 2023. Photographers, painters, writers...we're not sure yet what shape the project will take next year! Have a suggestion? We'd love to hear it!

The Genesee Valley 100 is presented by:



**Genesee Valley
Conservancy**

About Us

We are your local conservancy, working to protect important lands in the Genesee Valley that provide clean air and water, diverse habitat, locally grown food, and outdoor recreation.



The Gully Preserve

In 2021 we protected a stunning property in Wayland thanks to a generous donation by Jocelyn Goldberg-Schaible. We've since adopted a management plan to protect and enhance this place.

As the drinking water source for Dansville, the stream here is our highest priority. We're working to protect the hemlock forest that shades, cools, and keeps this stream clean.

The public access to this property, long enjoyed informally by the community, is also central to our plans. Established trails are now open for all to enjoy a hike to view the waterfalls.

We're busy at work to make this a great new preserve. Your support will help us continue these efforts into the future!



Winter Epaulets
Roy Grisewood
Canvas #1

\$140.00

*100% of proceeds donated to
Genesee Valley Conservancy!*

<-Piece title
<-**Artist**
<-# (to find online)

<-Price
<-Location, if a
Conservancy project
<-THANKS to these
generous artists!



A View of Little Mill Creek
Judy Soprano
Canvas #2

\$325.00

The Gully Preserve



A Scene of Little Mill Creek
Judy Soprano
Canvas #3

\$325.00

The Gully Preserve



Sunset Dream
Vanessa Baker
Canvas #4

\$230.00

*100% of proceeds donated to Genesee
Valley Conservancy!*

#GeneseeValley100



Another Day on the Lake
Abigail Rockcastle
Canvas #5

\$275.00

100% of proceeds donated to Genesee Valley Conservancy!



Perry Sea Serpent
Emma True
Canvas #6

\$150.00

100% of proceeds donated to Genesee Valley Conservancy!



Dreamy Bridge
Ana-Belle Rojas-Figoura
Canvas #7

\$150.00

100% of proceeds donated to Genesee Valley Conservancy!



Caterpillar Hunting
Emma Phillips
Canvas #8

\$175.00

100% of proceeds donated to Genesee Valley Conservancy!



Genesee Valley Scene
Alex Mosher
Canvas #9

\$40.00

100% of proceeds donated to Genesee Valley Conservancy!



Genesee Valley Gorge
Lauren Holderer
Canvas #10

\$150.00

100% of proceeds donated to Genesee Valley Conservancy!



Take Off
Jada Scott
Canvas #11

\$40.00

100% of proceeds donated to Genesee Valley Conservancy!



Favorite View
Mary Lee Page
Canvas #12

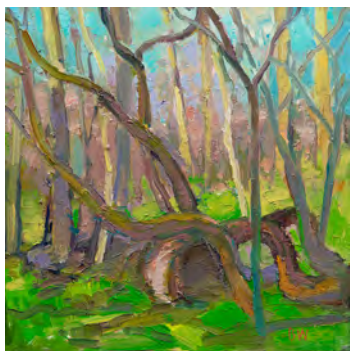
\$250.00



The Ikeler Barn
Lilly Thiel Milliman
Canvas #13

\$175.00

100% of proceeds donated to Genesee Valley Conservancy!



Into the Woods
Bill White
Canvas #14

\$250.00

100% of proceeds donated to Genesee Valley Conservancy!



Wolf Creek Bridge
Karlene VanDeusen
Canvas #15

\$270.00



Bee in the Bluebells
Karlene VanDeusen
Canvas #16

\$250.00

Culvert Farm



Indian Fort 07-24-2022
Jeannette McDunnah
Canvas #17

\$200.00
Indian Fort Nature Preserve

100% of proceeds donated to Genesee Valley Conservancy!



Bluebells of the Genesee Valley
Leslie Heen
Canvas #18

\$600.00
Culvert Farm



Cosmos
Crystal Joy Hill
Canvas #19

\$250.00
Fallbrook



Heron in the gloaming
Anne Pepe
Canvas #20

\$125.00



Roving in the Clover
Dan Jeffres
Canvas #21

\$300.00



The Mighty Genesee
Betsy Hoefen
Canvas #22

\$200.00
Ashantee

100% of proceeds donated to Genesee Valley Conservancy!



The Little Mill Creek
Mark Domagala
Canvas #23

\$300.00
The Gully Preserve



Let's Go For A Walk
Frederick Schuknecht IV
Canvas #24

\$120.00

100% of proceeds donated to Genesee Valley Conservancy!



I am back!
Sonja Olbert
Canvas #25

\$150.00
Genesee River

100% of proceeds donated to Genesee Valley Conservancy!



Sunshine and Spring Green
Cindy Dalton
Canvas #26

\$100.00



Elm Spirit Beside the Pool
Dawn M. Robinson
Canvas #27

\$180.00



Bluebell Woods
Martha Price
Canvas #28

\$200.00
Culvert Farm



Harvest Old Acres Farm
Bonnie Leigh
Canvas #29

\$140.00
Old Acres Farm



View of the Valley
Karlene VanDeusen
Canvas #30

\$250.00
Island Preserve



South End of Conesus
Erin Hanafin Sweeney
Canvas #31

\$250.00

100% of proceeds donated to Genesee Valley Conservancy!



Autumn Reflections
Carol Ann Ewert
Canvas #32

\$65.00



March, Barber Road

Jean Stephens

Canvas #33

\$300.00

100% of proceeds donated to Genesee Valley Conservancy!



Fruits of the Rain

Holly Watson

Canvas #34

\$200.00

100% of proceeds donated to Genesee Valley Conservancy!



Little Rush Creek, Botsford

Karen Barber

Canvas #35

\$50.00

100% of proceeds donated to Genesee Valley Conservancy!



Follow the Path

Marge Curci

Canvas #36

\$200.00

Mill Creek Nature Preserve

100% of proceeds donated to Genesee Valley Conservancy!



Yellow Warbler
Carole Missel
Canvas #37

\$80.00



Looking Downstream Toward Big Bend
Geoffrey Wittig
Canvas #38

\$500.00



Carney Road
Geoffrey Wittig
Canvas #39

\$500.00



390 Southbound
Trisha Koomen
Canvas #40

\$200.00

100% of proceeds donated to Genesee Valley Conservancy!



Before the Rain
Lois Lubber
Canvas #41

\$425.00



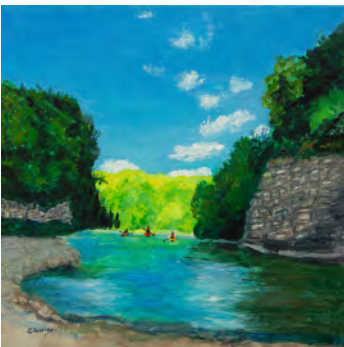
Outfoxed in the Genesee Valley
Nancie Battaglia
Canvas #42

\$250.00
Nations Road



Balloons Over Letchworth
Madeleine Rusch
Canvas #43

\$75.00



Lee's Landing Letchworth
Judy Gurley
Canvas #44

\$150.00

100% of proceeds donated to Genesee Valley Conservancy!



Letchworth State Park Stream

Julie Jensen

Canvas #45

\$250.00



Untitled

Jo Konvins

Canvas #46

\$50.00

100% of proceeds donated to Genesee Valley Conservancy!



A View from Jones Bridge Road

Amy DiSalvo

Canvas #47

\$200.00

Jones Bridge Road



First Cutting - Papermill Road, Avon

Kathy Mannix

Canvas #48

\$100.00

100% of proceeds donated to Genesee Valley Conservancy!



Hemlock Farm #1
Carl Shanahan
Canvas #49

\$125.00

100% of proceeds donated to Genesee Valley Conservancy!



Hemlock Farm #2
Carl Shanahan
Canvas #50

\$125.00

100% of proceeds donated to Genesee Valley Conservancy!



My Back Yard
Linda Miranda Fix
Canvas #51

\$80.00



Whiteman Gully Falls
Dan Heale
Canvas #52

\$200.00

The Gully Preserve

100% of proceeds donated to Genesee Valley Conservancy!



Summer: Obfuscation
Rose Marie Sherwood
Canvas #53

\$800.00 (includes #54 below)



Winter: Full Discolsure
Rose Marie Sherwood
Canvas #54

\$800 (includes #53 above)



Eagle Eye Over Letchworth
Alex Bickel
Canvas #55

\$200.00



Geneseo Valley Floor - Looking West
Oliver Bickel
Canvas #56

\$75.00



See You Tomorrow
Catherine M. Walter
Canvas #57

\$111.00
Nations Road



Uncle Homer's Sunset
Miranda Copeland
Canvas #58

\$40.00
Triple H Farms

100% of proceeds donated to Genesee Valley Conservancy!



Letchworth Park
Teresa Tamfer
Canvas #59

\$125.00

100% of proceeds donated to Genesee Valley Conservancy!



Expansive Valley
Emily Kreutter
Canvas #60

\$50.00



Middlebury Overlook
Rick Ellingham
Canvas #61

\$125.00



5 Arch Bridge
Joan Dalba
Canvas #62

\$100.00



Autumn on the Greenway
Ashley Clark
Canvas #63

\$40.00

100% of proceeds donated to Genesee Valley Conservancy!



Genesee River
Sauna Blake
Canvas #64

\$125.00

Indian Fort Nature Preserve

100% of proceeds donated to Genesee Valley Conservancy!



In Route To Rushford
Nicole Greenbaum
Canvas #65

\$225.00



Waterfalls at The Gully Preserve
Jeanne Rounsville
Canvas #66

\$175.00
The Gully Preserve

100% of proceeds donated to Genesee Valley Conservancy!



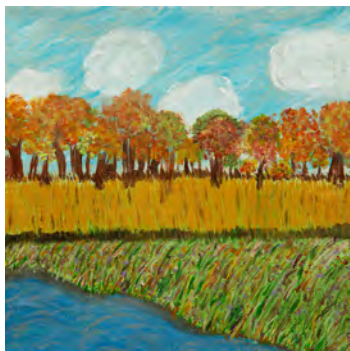
Over the Conesus Creek
Erik L. Wake
Canvas #67

\$300.00



The Sentry Through the Seasons
Mary A. Gibson
Canvas #68

\$75.00



From the Creek, and Abstract View

Cheryl Gibson

Canvas #69

\$40.00



Hillside over Angelica

Lisa Robinson

Canvas #70

\$225.00



Winter Whiskers

Karen Ryan

Canvas #71

\$225.00



SUNY Geneseo

Lydia Zwierzynski

Canvas #72

\$200.00



Flats Road Piffard Sunset

Lily Donnan

Canvas #73

\$100.00

100% of proceeds donated to Genesee Valley Conservancy!



Middle Falls in Autumn

Laura Jaen Smith

Canvas #74

\$430.00



Late Summer, Nations Road

Steven Piotrowski

Canvas #75

\$400.00

Nations Road



"Happy Little Accidents" at Five Arch Bridge

Jean Dombroski

Canvas #76

\$40.00

100% of proceeds donated to Genesee Valley Conservancy!



The Gardener
Beth Carr
Canvas #77

\$125.00

100% of proceeds donated to Genesee Valley Conservancy!



Nations Road
Beth Carr
Canvas #78

\$125.00
Nations Road

100% of proceeds donated to Genesee Valley Conservancy!



Looking Over Genesee Valley
Tim Mason
Canvas #79

\$395.00



Fertile Soil
Connie Ehindero
Canvas #80

\$200.00

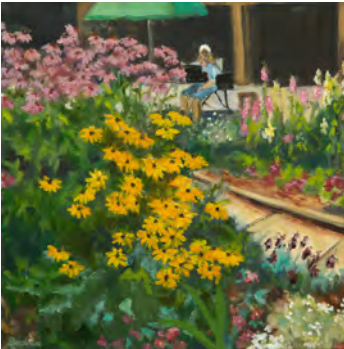
100% of proceeds donated to Genesee Valley Conservancy!



Listening
Gillian Conde
Canvas #81

\$75.00

100% of proceeds donated to Genesee Valley Conservancy!



The Artist Tends (and Paints) Her Land
Mary Buchan
Canvas #82

\$150.00

100% of proceeds donated to Genesee Valley Conservancy!



Winter on Conesus
Jennifer O'Shea
Canvas #83

\$75.00

100% of proceeds donated to Genesee Valley Conservancy!



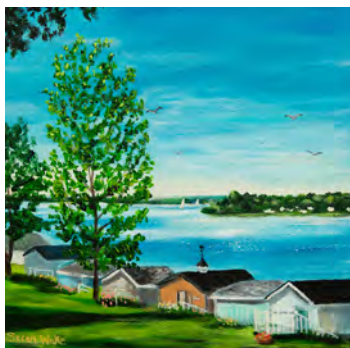
Barn on Nations
Adrianna Sangnedolce
Canvas #84

\$40.00
Nations Road



Dining Out
Susan Wake
Canvas #85

\$150.00



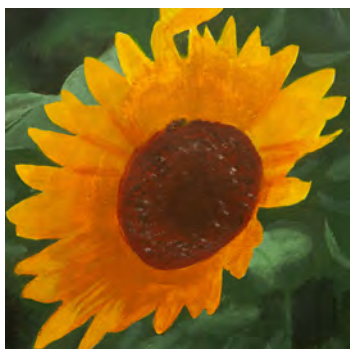
"D'Argento"
Susan Wake
Canvas #86

\$275.00



A Path to Dusk
Emily DePuy
Canvas #87

\$75.00



New Beginnings
Lili Weber
Canvas #88

\$50.00
Nations Road



Over the Horizon
Ava Scoville
Canvas #89

\$100.00



A Road to the Future
Elizabeth Adams
Canvas #90

\$100.00
Nations Road

100% of proceeds donated to Genesee Valley Conservancy!



Purple #42
Rob Antonucci
Canvas #91

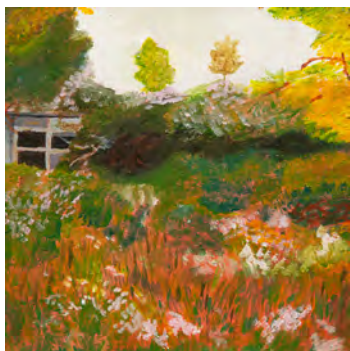
\$150.00

100% of proceeds donated to Genesee Valley Conservancy!



Morning Ride
Poppy Thomas
Canvas #92

\$100.00
Nations Road



Hidden Barn
Jake Bucci
Canvas #93

\$100.00



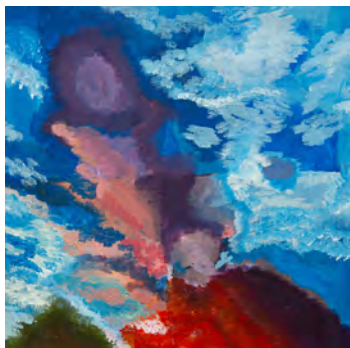
Beauty of Tomorrow
Samantha McDonald
Canvas #94

\$300.00
Avon Road



Midsummer Sky
Luke Rubeck
Canvas #95

\$125.00



Sunny Clouds
May Blackman
Canvas #96

\$100.00



Sailing Skies
April Ford
Canvas #97

\$95.00



Autumn Nights
Madeline Geiser-Getz
Canvas #98

\$130.00
Nations Road



Chicks
Steve Warner
Canvas #99

\$40.00

100% of proceeds donated to Genesee Valley Conservancy!



Genesee Valley Low Lands
Melanie Rinn Martinek
Canvas #100

\$295.00
Howlett Farm



Oatka Creek Park
Bonnie Gloris
Canvas #101

\$275.00



Sunlit Path
Amanda Lai
Canvas #102

\$100.00



The Calm Before The Storm
Madison Gardner
Canvas #103

\$125.00



Genesee River
Anne McCune
Canvas #104

\$195.00

Indian Fort Nature Preserve



Letchworth View
Phyllis Bryce Ely
Canvas #105

\$375.00

100% of proceeds donated to Genesee Valley Conservancy!



Letchworth
Maureen Church
Canvas #106

\$395.00



Oxbow 1
Jim Mott
Canvas #107

\$450.00
The Oxbow



Dappled Woods, Mulligan Farm
Jim Mott
Canvas #108

\$325.00
Mulligan Farm



Touch of Grace
Marlene Whitmore-Haman
Canvas #109

\$150.00

100% of proceeds donated to Genesee Valley Conservancy!



Sunflower
Elizabeth Patteson
Canvas #110

\$240.00



Winter Trek (framed as shown)
Lynn Wright
Canvas #111

\$400.00



Summer Delight (framed as shown)
Lynn Wright
Canvas #112

\$425.00



Joy on the Genesee (framed as shown)

Michael Sparling

Canvas #113

\$450.00

Roots Tavern Road



Highlight (framed as shown)

Trevor Horzempa

Canvas #114

\$800.00

Indian Fort Nature Preserve

100% of proceeds donated to Genesee Valley Conservancy!



Bluebell Magic

Tivessa

Canvas #115

\$100.00

Culvert Farm

100% of proceeds donated to Genesee Valley Conservancy!

A few works from past shows will hang in the brewery and be available online! Don't let these treasures slip away again!



Genesee Valley Conservancy

Trail Cam: The Gully Preserve

Wildlife depend on natural lands to survive. The Gully Preserve in Wayland with its hemlock forest and high quality stream, provides ideal habitat for a wide variety of animals.

We have been regularly seeing racoons, coyotes, fox, fishers, skunk, deer, and even a variety of birds from our cameras at the preserve, including these images:



Turkey

You may not often see turkeys, but chances are they've seen you. Turkeys can see in color and their eyesight covers 270 degrees. Wild turkeys can fly, but this one was caught walking through the forest at the preserve.



Fox

Red foxes can be red, grey, black or white. Most commonly they're red. Key identifiers of a red fox are its black legs, black-tipped ears, white-tipped tail, and dog-like face. They can grow up to 20 inches in height and weigh up to 35lbs.



Fisher

Typically at night, and always a bit of a blur, fisher cats are crossing by our trail camera in the hemlock forest! They are not actually felines, but members of the weasel family closely related to badgers, mink and otters.



Genesee Valley Conservancy

Your Local Land Conservancy!

Become a supporter this year



Your support will help increase the pace of local conservation conservation in 2023!

Check:

Mail a donation to us at:
Genesee Valley Conservancy
PO Box 73, Geneseo NY 14454

Credit Card:

Visit our website and click "Donate" button to make a gift now!

Monthly Giving:

Provide ongoing support all year long by spreading your gift out each month. Fully automatic, from your credit card or checking account. Visit: www.geneseevalleyconservancy.org/monthly-giving

THANK YOU!



Genesee Valley Conservancy

Farmland Protection

The Genesee Valley is a working landscape. The natural resources here enable people to farm to provide for the community: food, jobs, a way of life.

We are working to protect the productive soils in the Genesee Valley to ensure they are not lost to development, but remain open and available for agricultural use for generations to come.



Emerling Farm

Thanks to the Emerling Family, over 1,300 new farmland acres have been protected in Perry.

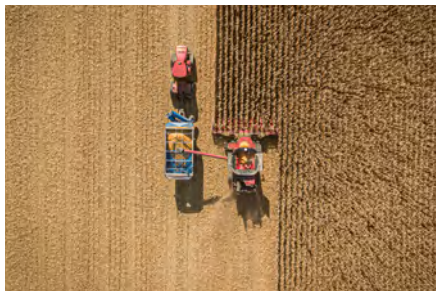
This dairy farm has over 60% USDA Prime soils and is transitioning from the 2nd to the 3rd generation of the family.



Armson Farms

The Milligan family has worked to protect over 1,030 acres of farmland in Covington and York this year.

The farm has 70% USDA Prime and 11% State Important soils and expands upon neighboring protected farmland.



Ongoing Efforts

We currently have over 10,800 acres of farmland protection projects underway. These projects span three counties and fourteen towns.

This work will help family farms keep their lands and continue farming.



Genesee Valley Conservancy

Your Local Land Conservancy!

Remember us in your Will



A gift via your Will can provide support for our next major conservation project. It is a legacy you can leave for the entire community.

To name **Genesee Valley Conservancy, Inc.** as a beneficiary of your Will, life insurance policy, investment account or retirement account, contact your attorney or account manager for the paperwork. We can be named as:

*Genesee Valley Conservancy, Inc.
PO Box 73, One Main Street
Geneseo, NY 14454
Federal Tax ID #: 23-3061147*

To discuss estate gifts in more detail,
contact Ben at the office.



#GeneseeValley100



Genesee Valley Conservancy
PO Box 73
Geneseo, NY 14454
(585) 243-2190
www.geneseevalleyconservancy.org



**Genesee Valley
Conservancy**

